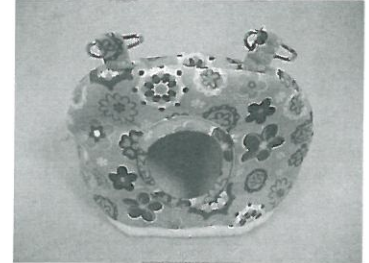


阿迷購寵物用品有限公司
台中市西屯區成都路 118 號

我們依照客戶的要求,根據客戶送交的樣品進行測試如下:



樣品敘述 : 一個粉紅花布/米黃色組阿迷購
幽浮造型鳥窩

收件日期 : 2012 年 04 月 12 日

測試週期 : 2012 年 04 月 12 日至 04 月 19 日

測試項目 & 測試方法: 依申請者要求進行下列測試

測試結果:

游離甲醛

測試方法: 依中華民國國家標準 CNS 12943 L3234 第 5.3.1(2)節 方法 B, 使用紫外光/
可見光分光光譜儀分析

測試結果

(ppm)

米黃色內布&底布的羊羔絨 混測
未偵測出

游離甲醛

備註: ppm = 百萬分之一
方法偵測極限值是 5 ppm

此項由 SGS 相關實驗室執行

*** 結 束 ***



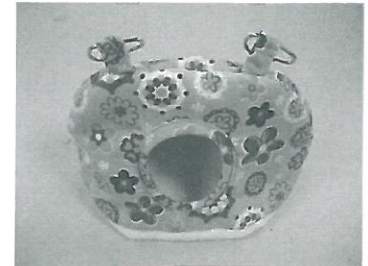
Unless otherwise stated the results shown in this test report refer only to the sample(s) tested. This test report cannot be reproduced, except in full, without prior written permission of the Company. 除非另有說明,此報告結果僅對測試之樣品負責。本報告未經本公司書面許可,不可部份複製。

This document is issued by the Company subject to its General Conditions of Service printed overleaf, available on request or accessible at www.sgs.com/terms_and_conditions.htm and, for electronic format documents, subject to Terms and Conditions for Electronic Documents at www.sgs.com/en/Terms-and-Conditions/Terms-e-Document. Attention is drawn to the limitation of liability, indemnification and jurisdiction issues defined therein. Any holder of this document is advised that information contained hereon reflects the Company's findings at the time of its intervention only and within the limits of Client's instructions, if any. The Company's sole responsibility is to its Client and this document does not exonerate parties to a transaction from exercising all their rights and obligations under the transaction documents. This document cannot be reproduced except in full, without prior written approval of the Company. Any unauthorized alteration, forgery or falsification of the content or appearance of this document is unlawful and offenders may be prosecuted to the fullest extent of the law.

阿迷購寵物用品有限公司
台中市西屯區成都路 118 號

我們依照客戶的要求,根據客戶送交的樣品進行測試如下:

樣品敘述 : 一個粉紅花布/米黃色組阿迷購
幽浮造型鳥窩



收件日期 : 2012 年 04 月 12 日

測試週期 : 2012 年 04 月 12 日至 04 月 19 日

測試項目 & 測試方法: 依申請者要求進行下列測試

測試結果:

游離甲醛

測試方法: 依中華民國國家標準 CNS 12943 L3234 第 5.3.1(2)節 方法 B, 使用紫外光/
可見光分光光譜儀分析

測試結果

(ppm)

米黃色內布&底布的羊羔絨 混測
未偵測出

游離甲醛

備註: ppm = 百萬分之一
方法偵測極限值是 5 ppm

此項由 SGS 相關實驗室執行

*** 結 束 ***



台灣檢驗科技股份有限公司

張美華
主任

Unless otherwise stated the results shown in this test report refer only to the sample(s) tested. This test report cannot be reproduced, except in full, without prior written permission of the Company. 除非另有說明,此報告結果僅對測試之樣品負責。本報告未經本公司書面許可,不可部份複製。

This document is issued by the Company subject to its General Conditions of Service printed overleaf, available on request or accessible at www.sgs.com/terms_and_conditions.htm and, for electronic format documents, subject to Terms and Conditions for Electronic Documents at www.sgs.com/terms_e-document.htm. Attention is drawn to the limitation of liability, indemnification and jurisdiction issues defined therein. Any holder of this document is advised that information contained hereon reflects the Company's findings at the time of its intervention only and within the limits of Client's instructions, if any. The Company's sole responsibility is to its Client and this document does not exonerate parties to a transaction from exercising all their rights and obligations under the transaction documents. This document cannot be reproduced except in full, without prior written approval of the Company. Any unauthorized alteration, forgery or falsification of the content or appearance of this document is unlawful and offenders may be prosecuted to the fullest extent of the law.